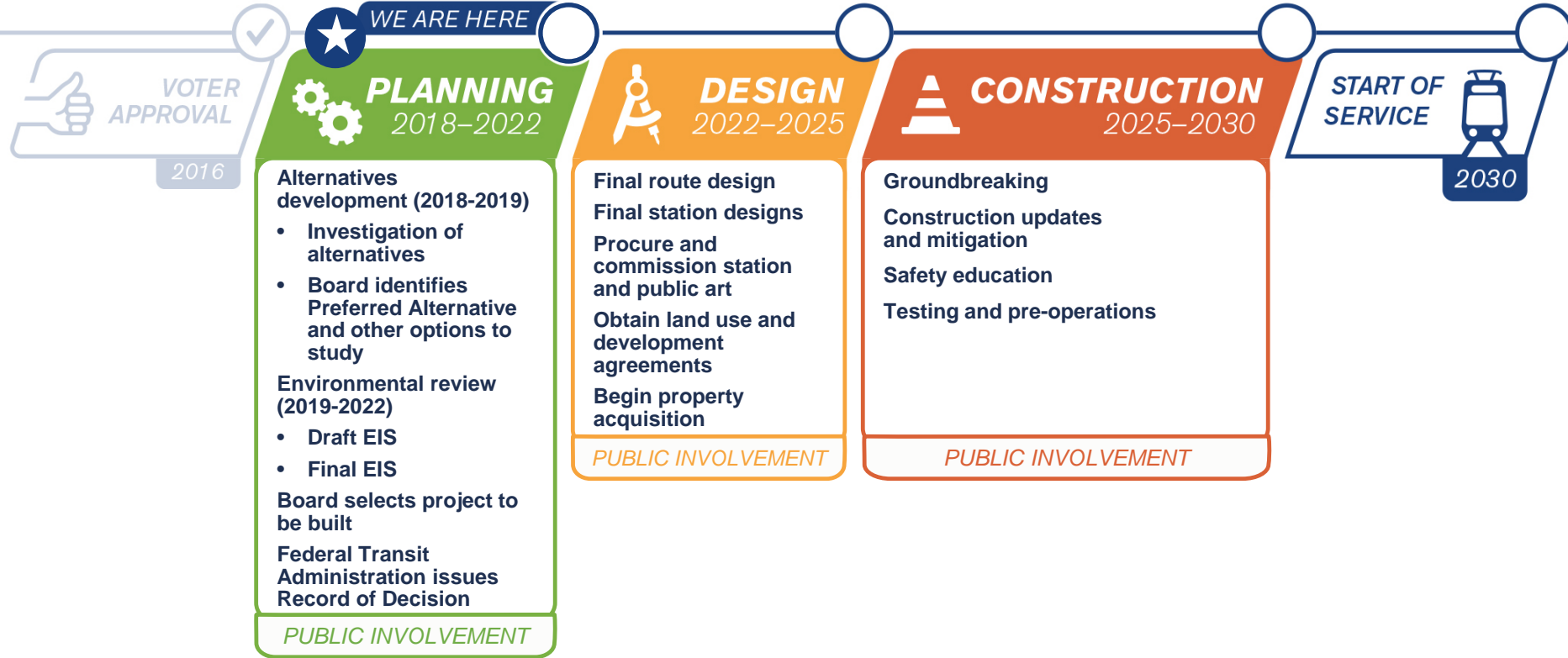


Tacoma Dome Link Extension

*Tacoma Project Updates
November 18-22, 2019*



Project timeline



Environmental review timeline*

Public participation throughout

2019

2020 / 2021

2022

Spring 2019

EIS scoping /
public comment period

July 2019

ST Board & FTA identified
preferred alternative and
other alternatives to study
in EIS

Spring 2021

Draft EIS issued;
public comment
period

Spring/Summer 2022

Final EIS issued

Summer 2022

ST Board selects
project to be built

FTA issues record of
decision (ROD)

Tacoma Dome Station: Guiding Principles

Element	Example keywords
Development Capacity	<ul style="list-style-type: none">• Retain development capacity• Proximity to adjacent development
Comfortable urban environment	<ul style="list-style-type: none">• Engaging street frontage• Pedestrian safety and walkability• Few visual and sunlight impacts
Great multi-modal transit hub	<ul style="list-style-type: none">• Direct, quick, and safe transfers between modes• Passenger amenities nearby• Avoid, or incorporate, enhance, Freighthouse Square

Suggestions we've heard:

Development capacity

- Promote development capacity
- Don't detract from development potential

Comfortable urban environment

- Well-integrated into the neighborhood
- Passenger weather protection
- ADA accessibility

Great multi-modal transit hub

- Passenger amenities integrated or nearby
- Special events considerations (circulation)
- Be a catalyst for and enhance the neighborhood



General/other

- Sensitivity to historic and cultural resources
- Traffic and parking management




Alternatives for EIS Updates

Tacoma Station Area

Preferred alternative:

-  *Portland Avenue*
-  *Tacoma 25th-West*

Other alternatives for EIS:

-  *Tacoma 25th-East*
-  *Tacoma 26th Street*
-  *Tacoma Close to Sounder*



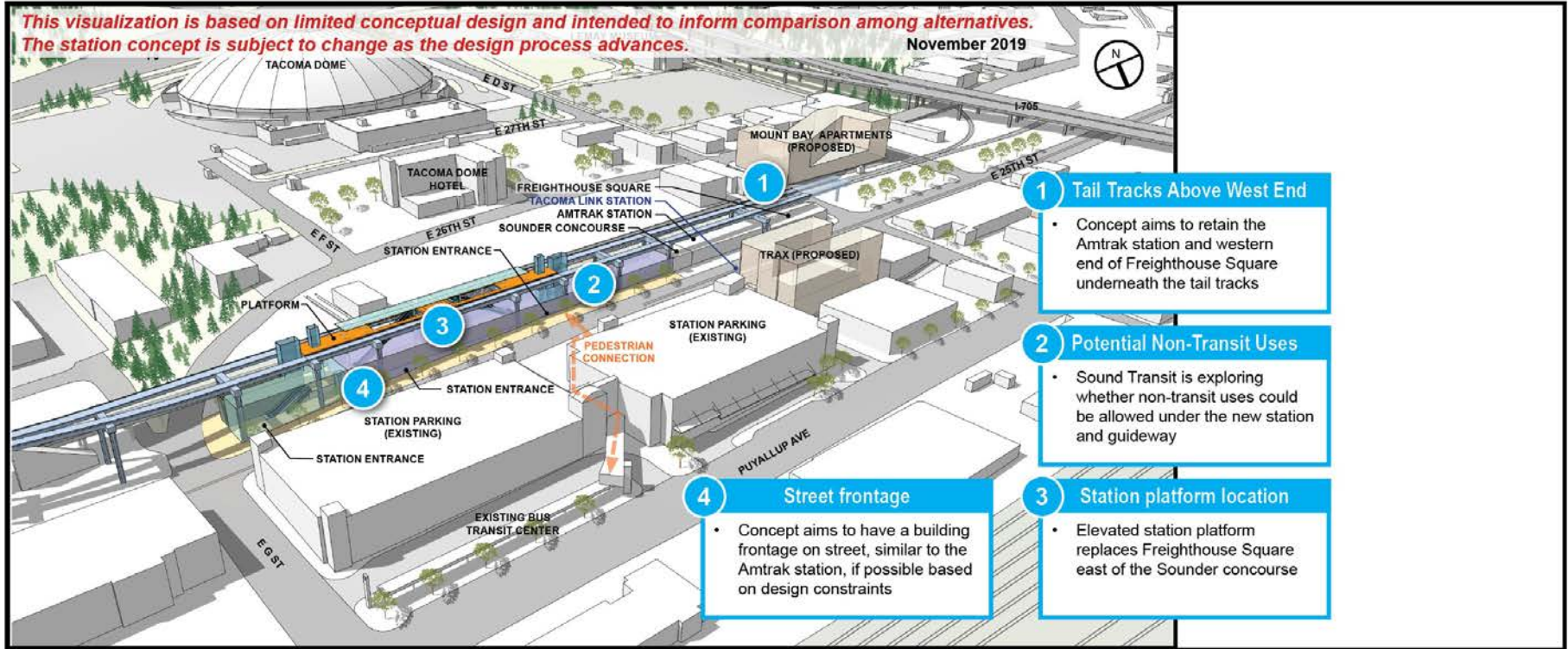
DRAFT for discussion purposes

Tacoma Dome Station Updates

TD Close to Sounder

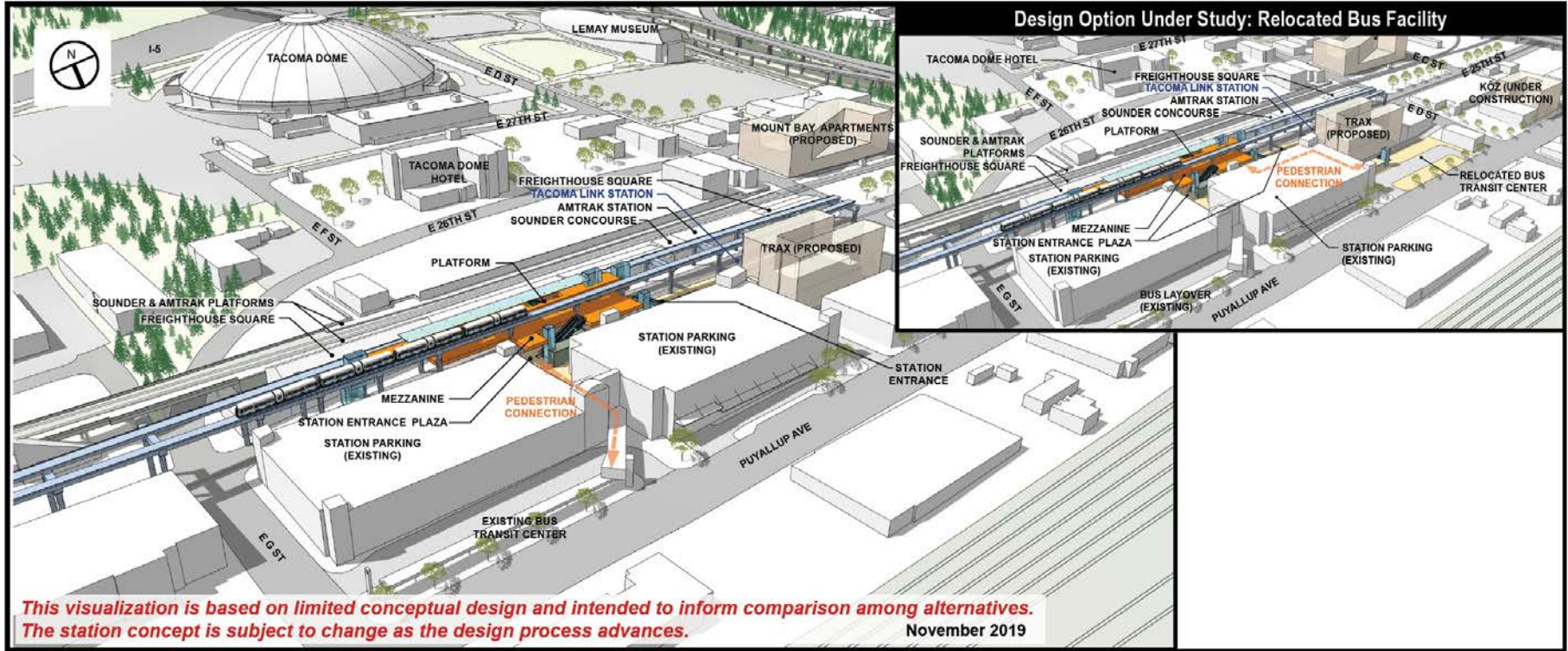
This visualization is based on limited conceptual design and intended to inform comparison among alternatives. The station concept is subject to change as the design process advances.

November 2019



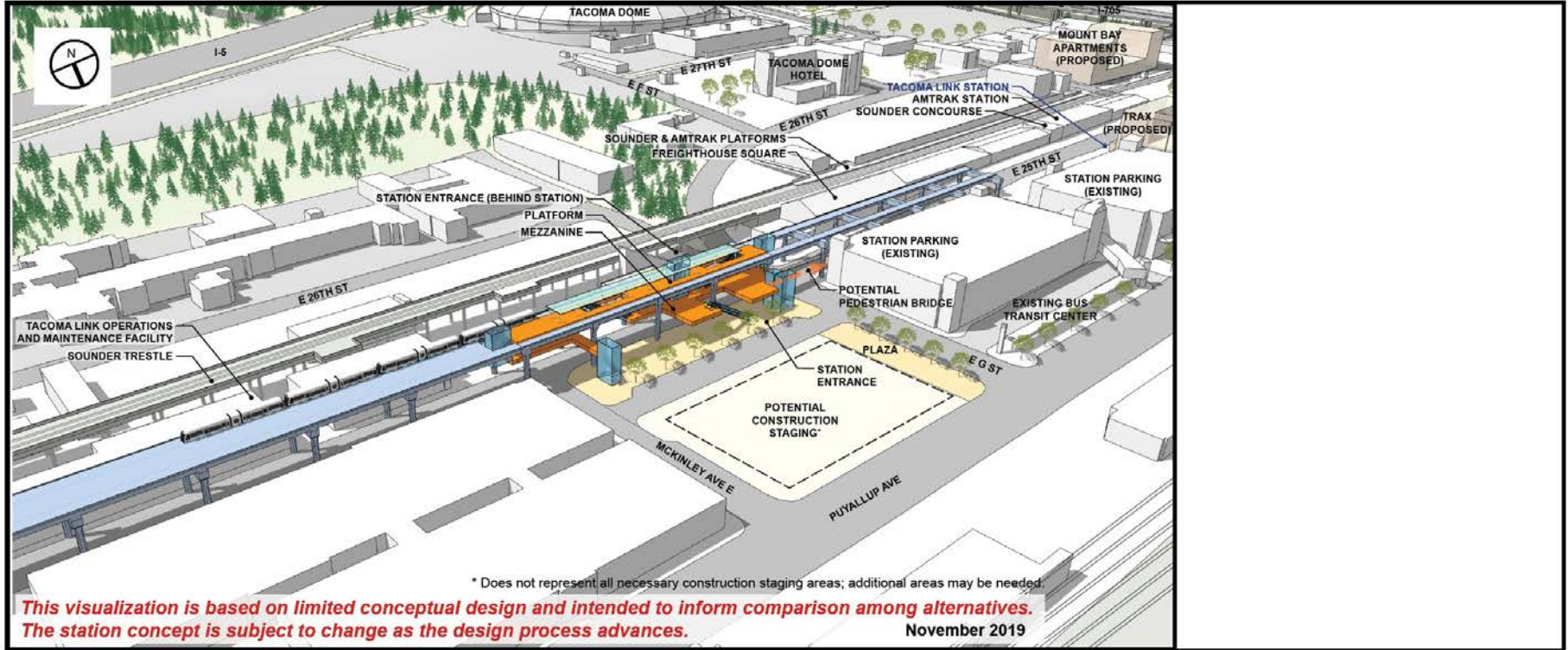
Tacoma Dome Station Updates

TD 25th West



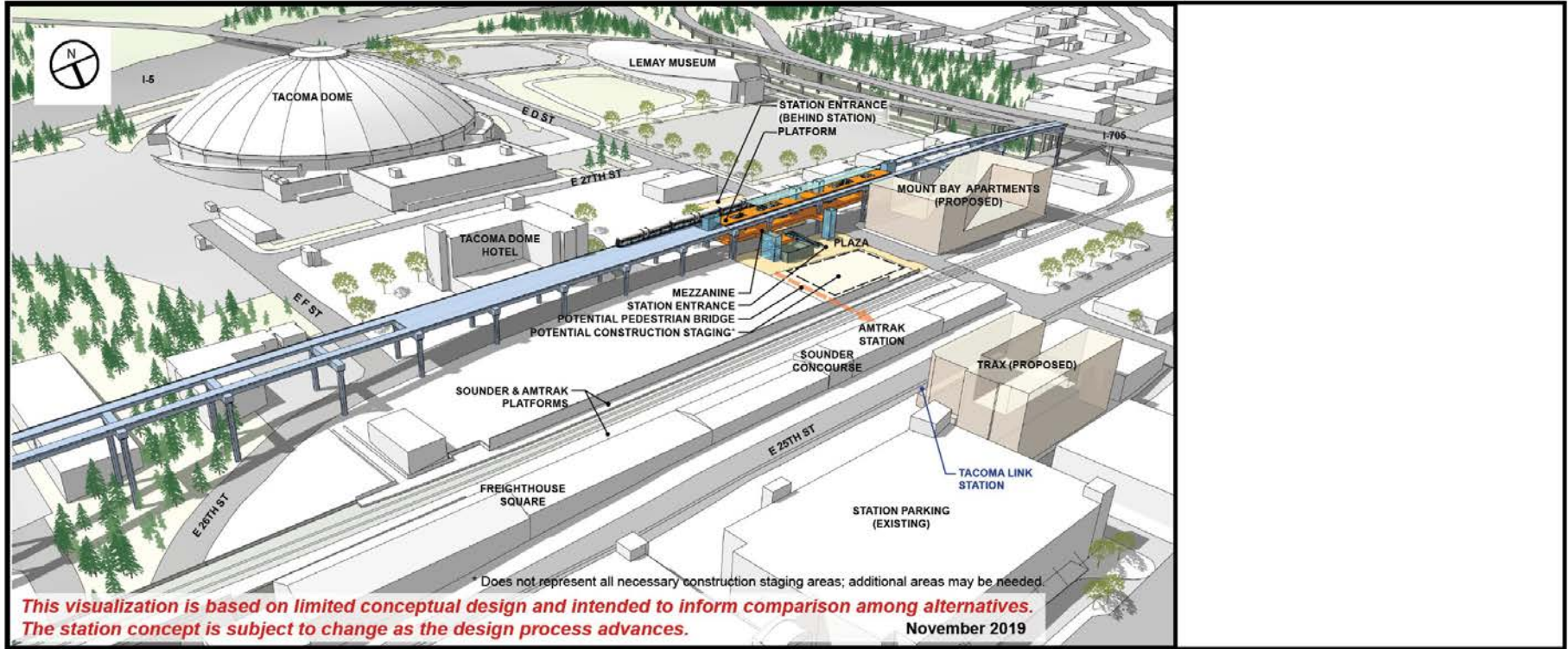
Tacoma Dome Station Updates

TD 25th East

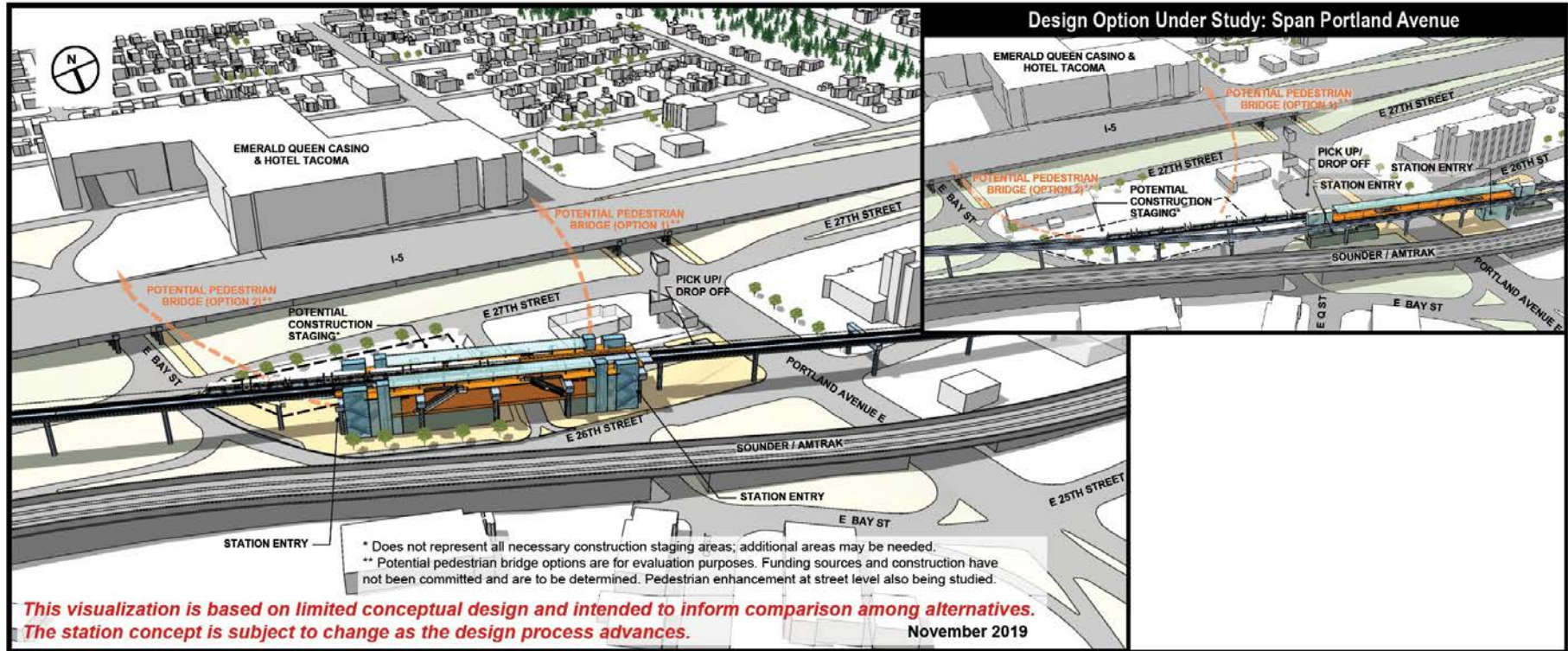


Tacoma Dome Station Updates

TD 26th



Portland Avenue Station Updates



This visualization is based on limited conceptual design and intended to inform comparison among alternatives. The station concept is subject to change as the design process advances.

November 2019

Outreach and Next steps

- *City commissions*
- *Online open house*
- *<https://tdlink.participate.online/>*
- *Postcards*
- *Project neighbor mailers*
- *Freighthouse Square*
- *Drop in sessions*
- *Business district and neighborhoods*



Drop-in Sessions

- Saturday, Nov. 16, 10 a.m. – 12 p.m. // Eastside Community Center: 1721 E 56th St, Tacoma
- Wednesday, Nov. 20, 5 – 7 p.m. // Evergreen State College: 1210 6th Ave, Front Lobby, Tacoma
- Tuesday, Dec. 3, 10 a.m. – 12 p.m. // UW Tacoma Campus: 1900 Commerce St, Central Stairway, Tacoma
- Wednesday, Dec. 4, 6 – 8 a.m. // Sounder Station, 424 E 25th St., Tacoma

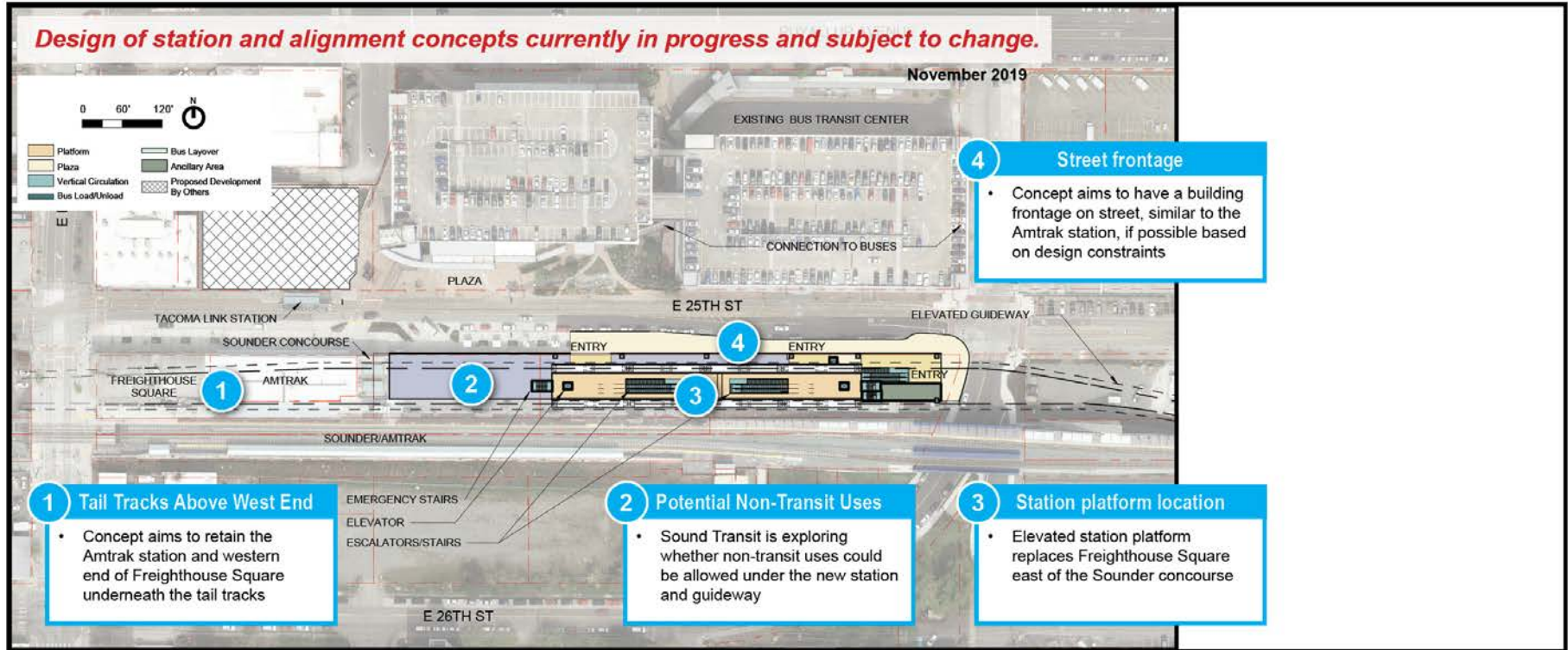
Thank you.



 [soundtransit.org](https://www.soundtransit.org)

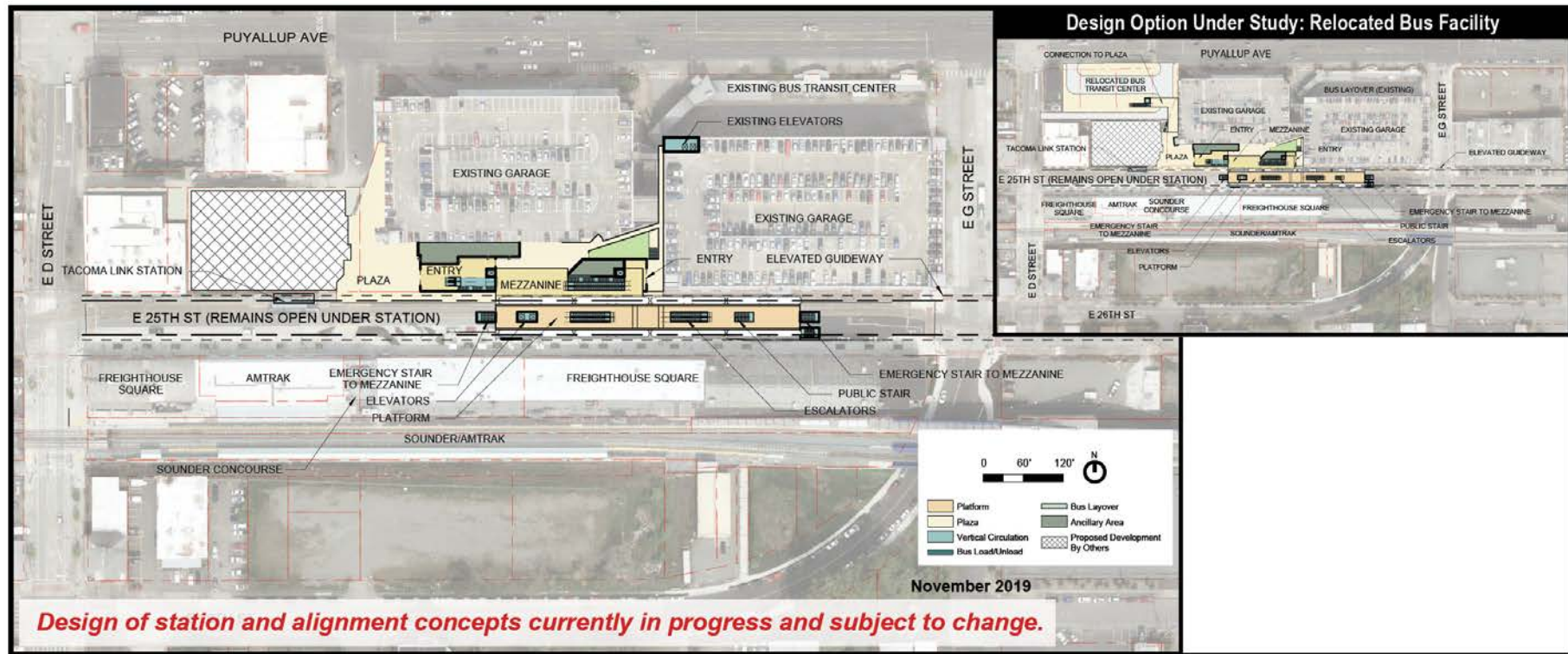


Tacoma Dome Station Updates TD Close to Sounder - Site Plan



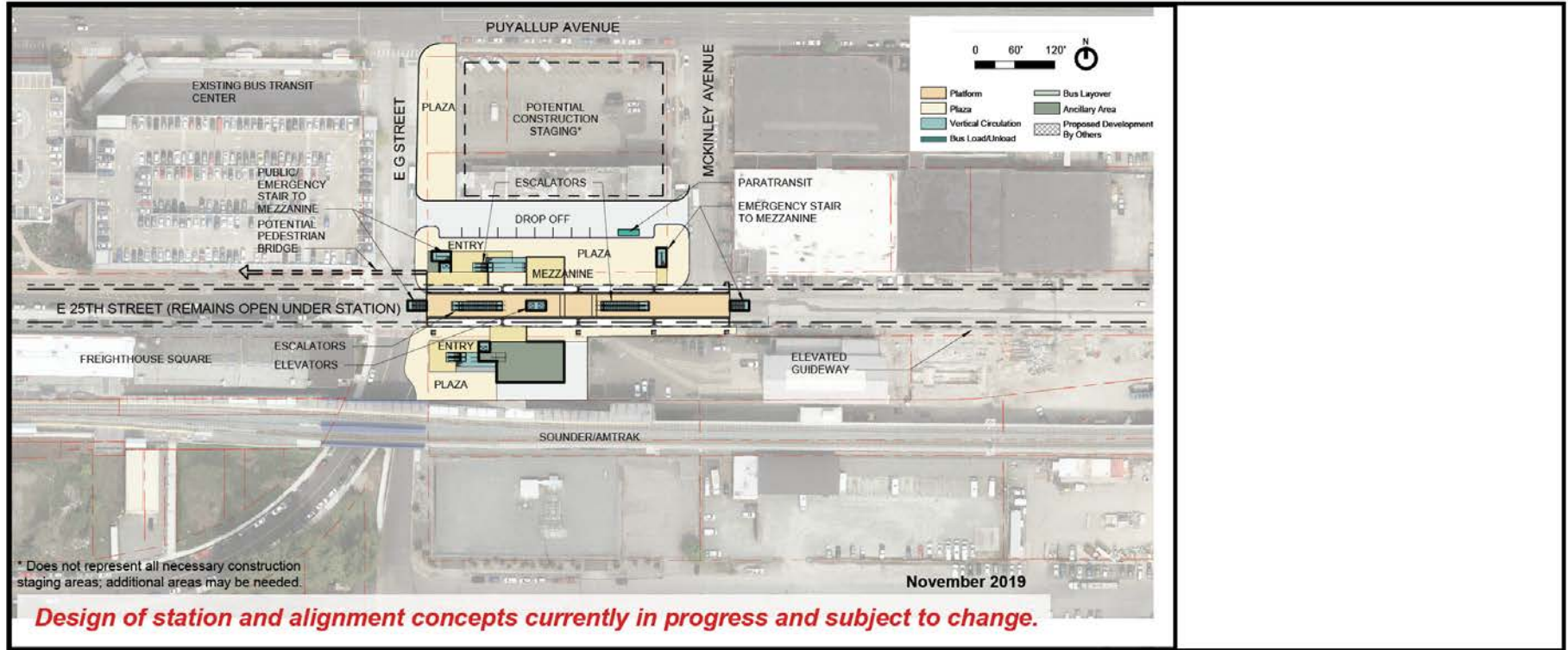
Tacoma Dome Station Updates

TD 25th West - Site Plan



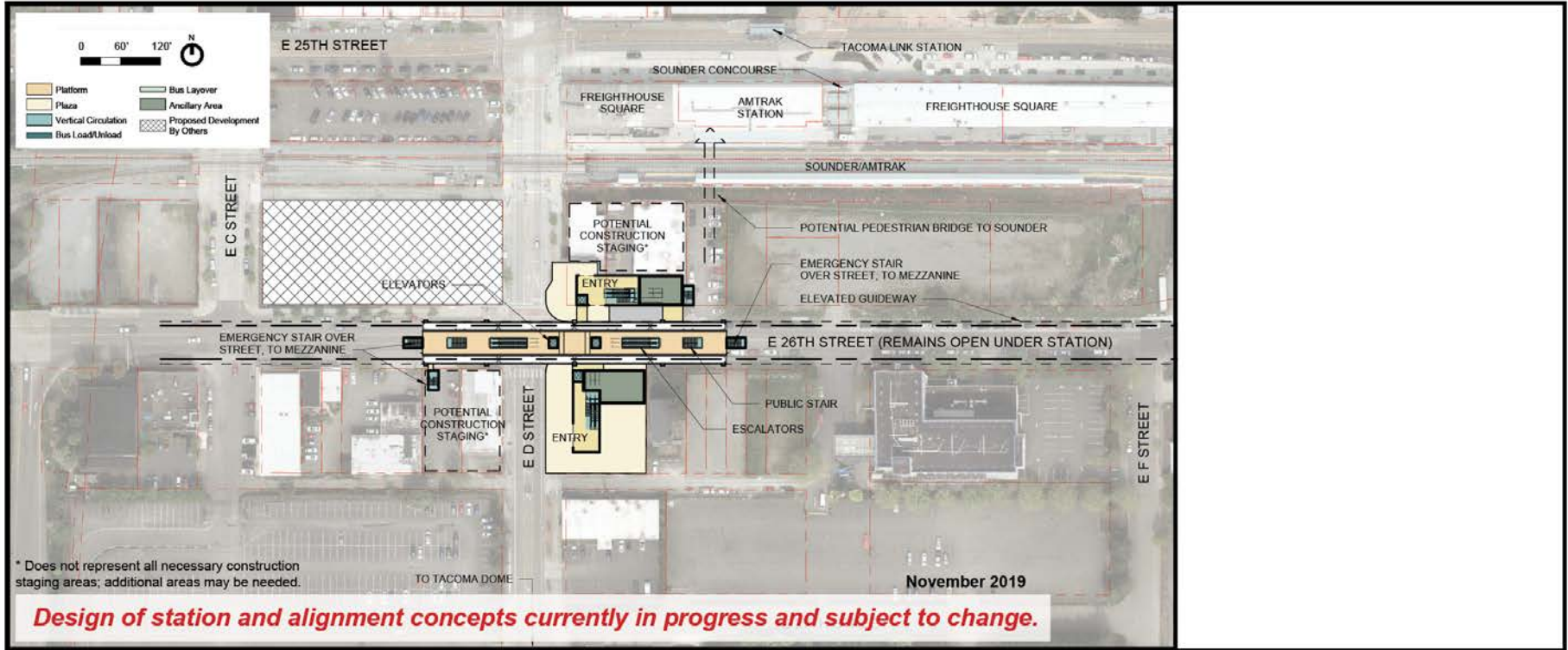
Tacoma Dome Station Updates

TD 25th East - Site Plan



Tacoma Dome Station Updates

TD 26th - Site Plan



Portland Avenue Station Updates

Portland Avenue - Site Plan

